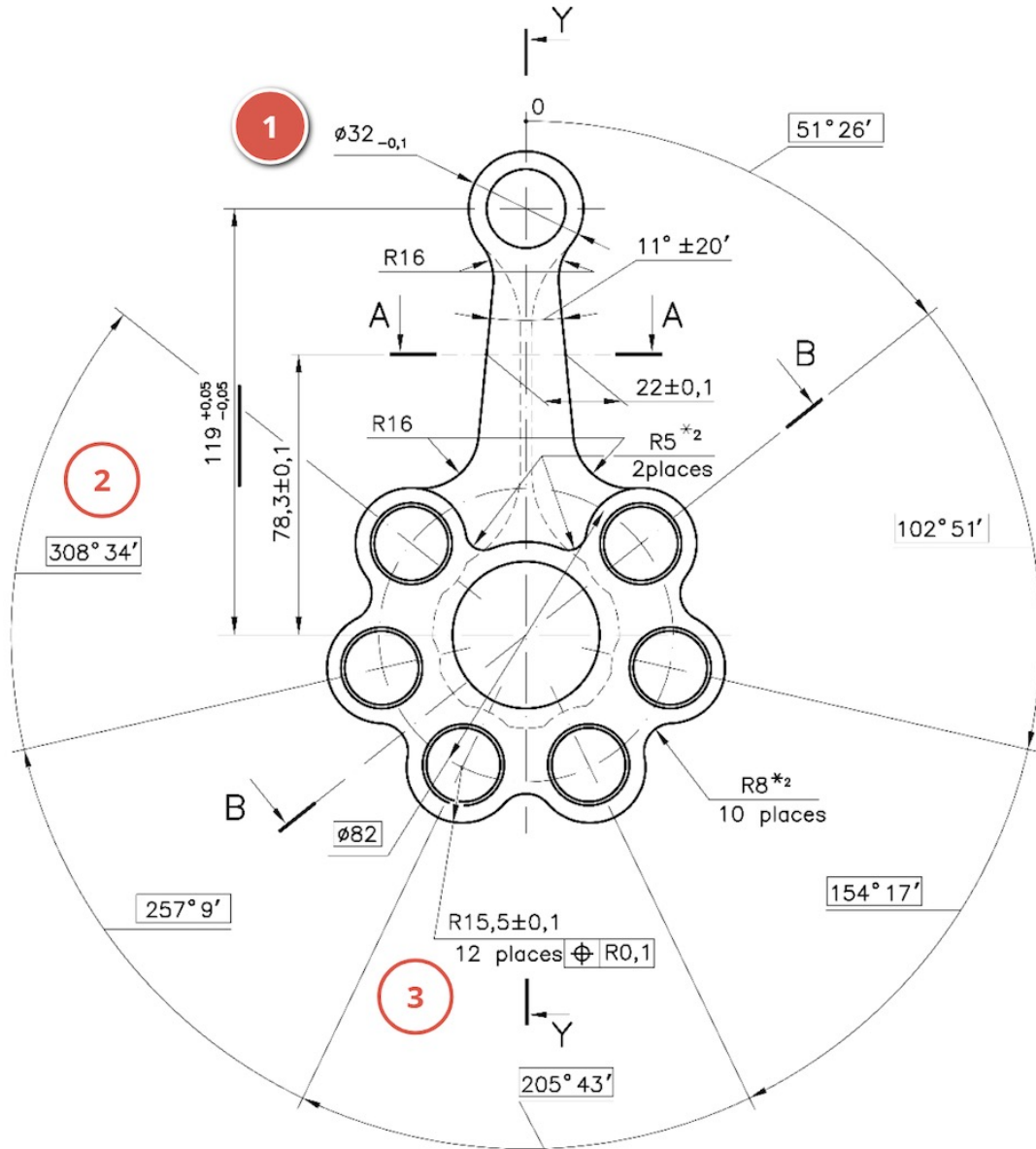




Manufacturing Quality Control Software



All-in-One. Easy-to-Use. Lightning-Fast.

Table of Contents

1. PDF Auto-Ballooning
2. Inspection Planning
3. First Article Inspection (FAI), AS9102
4. In-Process Inspections, SPC, Cp, Cpk
5. Data Collection, CMM Auto-Upload
6. Multi-Parameter Charting
7. Incoming Inspection, Lot Switching, Supplier Management
8. Defect Risk Monitoring
9. PPAP: Process Flow, PFMEA, Control Plan
10. NCR, CAPA, SCAR Management
11. Gage Calibration, Gage R&R, Gage Issue & Return
12. Security, Reliability, Validation, E-Signature
13. Industries & Geographies Served

“1factory is a complete game changer for our quality department. It reduces time spent preparing inspection reports by roughly 66%. Implementation and full integration took 2 hours. If you are not running 1factory your quality department is behind the times.. ”



Full Review: <https://www.capterra.com/p/151002/1factory/reviews/288993/>

PDF Auto-Ballooning

1factory PLANS - DP745-10 A - SHEET 1 [ALPHA CORPORATION] Help Jim Fisher

Edit balloon

Balloon 3
Zone E4
Places (X) 1
Char. Type* Min - Max
diameter
Nominal
Min. 0.805
Max. 0.815
Bonus tol. n/a
Descriptor
Unit
Data type NUM
Key Yes
Label CTQ
Insp. Method CMM
Sampl. Rule
Dim. Type Standard
Operation OP 10

RESET SAVE

REVISIONS

ZONE	REV	DESCRIPTION	DATE	APPROVED
------	-----	-------------	------	----------

THERE IS NO REQUIRED ANGULAR RELATIONSHIP WITH THE SQUARE AND CAM PROFILE

Speed-up drawing ballooning and save hours of QC time with lightning-fast automated drawing reading. Capture:

- Symbols: Diameter, True-Position, Flatness, Concentricity, MMC, etc.
- Specifications: Nom + -Tol, + + Tol, - -Tol, LSL-USL, MIN, MAX, GD&T etc.
- Notes: Point-and-click to combine multiple lines into a single note.
- CTQ: Critical to Quality characteristics

“My inspectors can spend more time inspecting parts, instead of creating bubbled drawings and inspection sheets.”



Full Review: <https://www.capterra.com/p/151002/1factory/reviews/356783/>

Inspection Planning (Control Plans)

1factory PLANS • PLAN DP745-10 A [ALPHA CORPORATION] Help Jim Fisher

Part Number **DP745-10** Rev A Description Tool Body Drawing Number DP745-10 Rev A

Manufacturing Plan: DP745-10 A

+ New spec Specs Customer (1) Defaults Documents (0) Properties Drawing PPAP History Manage

No.	Sheet/Zone	Specification	Places	Type [all]	Insp. Method [all]	Sampling [all]	Key ? [all]	Label [all]	Dim. [all]	Oper. [all]	Drawing	Insp. Types [all]	Instr ? [all]
1	1 : F5	0.843 — 0.847 in	1	NUM	Drop Indicator	C=0 1.5			STD	OP 10	Q	S_F	
2	1 : F5	0.623 — 0.627 in	1	NUM	Drop Indicator	C=0 1.5			STD	OP 20	Q	S_F	
3	1 : E4	0.805 — 0.815 in	1	NUM	CMM	1 in 10, 1 in 10, C=0 1...	✓	CTQ	STD	OP 10	Q	SIF	
4	1 : D5	0.213 — 0.218 in	1	NUM	CMM	C=0 1.5			STD	OP 20	Q	S_F	
5	1 : D6	0.169 — 0.174 in	1	NUM	CMM	1 in 10, 1 in 10, C=0 1...	✓	CTQ	MFG	OP 20	Q	SIF	
5.1	1 : D5	1 WALL ONLY	1	P/F	VISUAL	C=0 1.5			STD	OP 30	Q	S_F	
6	1 : D6	45 ± 1 deg	1	NUM	Optical Comparator	C=0 1.5			STD	OP 10	Q	S_F	
7	1 : D6	0.050 ± 0.005 in	2	NUM	Optical Comparator	C=0 1.0			STD	OP 20	Q	S_F	
8	1 : D6	R 0.060 — 0.065 in	1	NUM	VCMM	C=0 1.0			STD	OP 30	Q	S_F	
9	1 : E6	0.281 — 0.283 in	1	NUM	VCMM	C=0 1.0			STD	OP 10	Q	S_F	
10	1 : E7	0.3070 — 0.3075 in	1	NUM	CMM	1 in 10, 1 in 10, C=0 1...	✓	CTS	STD	OP 20	Q	SIF	
11	1 : E6	30 ± 1 deg	1	NUM	Optical Comparator	C=0 1.0			STD	OP 30	Q	S_F	
12	1 : F6	0.060 — 0.062 in	1	NUM	Caliper	C=0 1.0			STD	OP 10	Q	S_F	
13	1 : E2	0.381 ± .005 in	1	NUM	Caliper	C=0 1.0			STD	OP 20	Q	S_F	
14	1 : D2	0.005 AB in	1	NUM	CMM	first and last			STD	OP 10	Q	S_F	
14.1	1 : D1	THERE IS NO REQUIRED ANGULAR RELA...	1	P/F	VISUAL	C=0 4.0			STD	OP 30	Q	S_F	
15	1 : B1	0.0059 — 0.0069 in	1	NUM	CMM	C=0 4.0			STD	OP 30	Q	S_F	
16	1 : D3	R 0.030 ± .005 in	4	NUM	CMM	C=0 4.0			STD	OP 10	Q	S_F	
17	1 : F3	0.381 ± .005 in	1	NUM	CMM	C=0 4.0			STD	OP 30	Q	S_F	
18	1 : C7	32 in	1	NUM					STD		Q	SIF	

Align Engineering, Manufacturing & Quality Control teams by defining Characteristics, Inspection Methods, Sampling Rules and Operations. Easily create and maintain plans for Tabulated Drawings.

Manage Drawing Revisions (changes to designs) and Plan Versions (changes to inspection methods, sampling rules etc.). Add Manufacturing Specs and Track Deviations.

Make changes instantly available across the factory floor. Eliminate the need to print inspection spreadsheets for each operation.

“The workflow is fast which makes creating new plans and updating plans very easy. Users like the workflow, ease of use and the data visibility.”



Full Review: <https://www.capterra.com/p/151002/1factory/reviews/1907916/>

First Article Inspection (FAI), AS9102

1factory FAIS - FAI 100-03 [ALPHA CORPORATION] Help Jim Fisher

FAI Number 100-03 PO Number 276123 Serial Number SN-0001 Part Number DP745-10 Rev A Description Tool Body Drawing Number DP745-10 Rev A Customer Clarity Automoti...

Manufacturing FAI: 100-03 (Pending)

Form 1 Form 2 Form 3 (Unit #1) Attachments (1) Links (0) Reports History Manage

5-1. Char.	5-2. Place	6. Ref. Loc.	7. Char. Des.	8. Requirement	Type	9-1. Bonus Tol.	9-2. Results	Control bar	10-1. Design. tool.	How To	10-2. Gage ID	11. NCR #	14. Remarks
1	1	1 : F5		0.843 — 0.847 IN	NUM		0.8445 ✓		Drop Indicator		G10008 ✓		
2	1	1 : F5		0.623 — 0.627 IN	NUM		0.6254 ✓		Drop Indicator		G10008 ✓		
3	1	1 : E4	CTQ	0.805 — 0.815 IN	NUM		0.8093 ✓		CMM		G10009 ✓		
4	1	1 : D5		0.213 — 0.218 IN	NUM		0.2154 ✓		CMM		G10009 ✓		
5.1	1	1 : D5		1 WALL ONLY	P/F		PASS ✓		VISUAL		N/A ✓		
6	1	1 : D6		45 ± 1 DEG	NUM		45.36 ✓		Optical Compa...		G10007 ✓		
7	1 of 2	1 : D6		0.050 ± 0.005 IN	NUM		0.0512 ✓		Optical Compa...		G10007 ✓		
7	2 of 2	1 : D6		0.050 ± 0.005 IN	NUM		0.0510 ✓		Optical Compa...		G10007 ✓		
8	1	1 : D6		0.060 — 0.065 IN	NUM		0.0623 ✓		VCM		G10005 ✓		
9	1	1 : E6		0.281 — 0.283 IN	NUM		0.2826 ✓		VCM		G10005 ✓		
10	1	1 : E7	CTS	0.3070 — 0.3075 IN	NUM		0.3074 ✓		CMM		G10009 ✓		
11	1	1 : E6		30 ± 1 DEG	NUM		30.06 ✓		Optical Compa...		G10007 ✓		
12	1	1 : F6		0.060 — 0.062 IN	NUM		0.0612 ✓		Caliper		G10002 ✓		
13	1	1 : E2		0.381 ± .005 IN	NUM		0.3823 ✓		Caliper		G10002 ✓		
14	1	1 : D2		0.005 AB IN	NUM		0.0023 ✓		CMM		G10009 ✓		
14.1	1	1 : D1		THERE IS NO REQUIRED ANGULAR ...	P/F		PASS ✓		VISUAL		N/A ✓		
15	1	1 : B1		0.0059 — 0.0069 IN	NUM		0.0061 ✓		CMM		G10009 ✓		
16	1 of 4	1 : D3		0.030 ± .005 IN	NUM		0.0312 ✓		CMM		G10009 ✓		
16	2 of 4	1 : D3		0.030 ± .005 IN	NUM		0.0302 ✓		CMM		G10009 ✓		

Speed-up First Article Inspections by automating drawing ballooning, data collection (digital gages, CMMs), and report creation (AS9102 and other formats).

Create FAI package with Ballooned Drawing, Inspection Data, Raw Material, Outside Processing and Test Certificates.

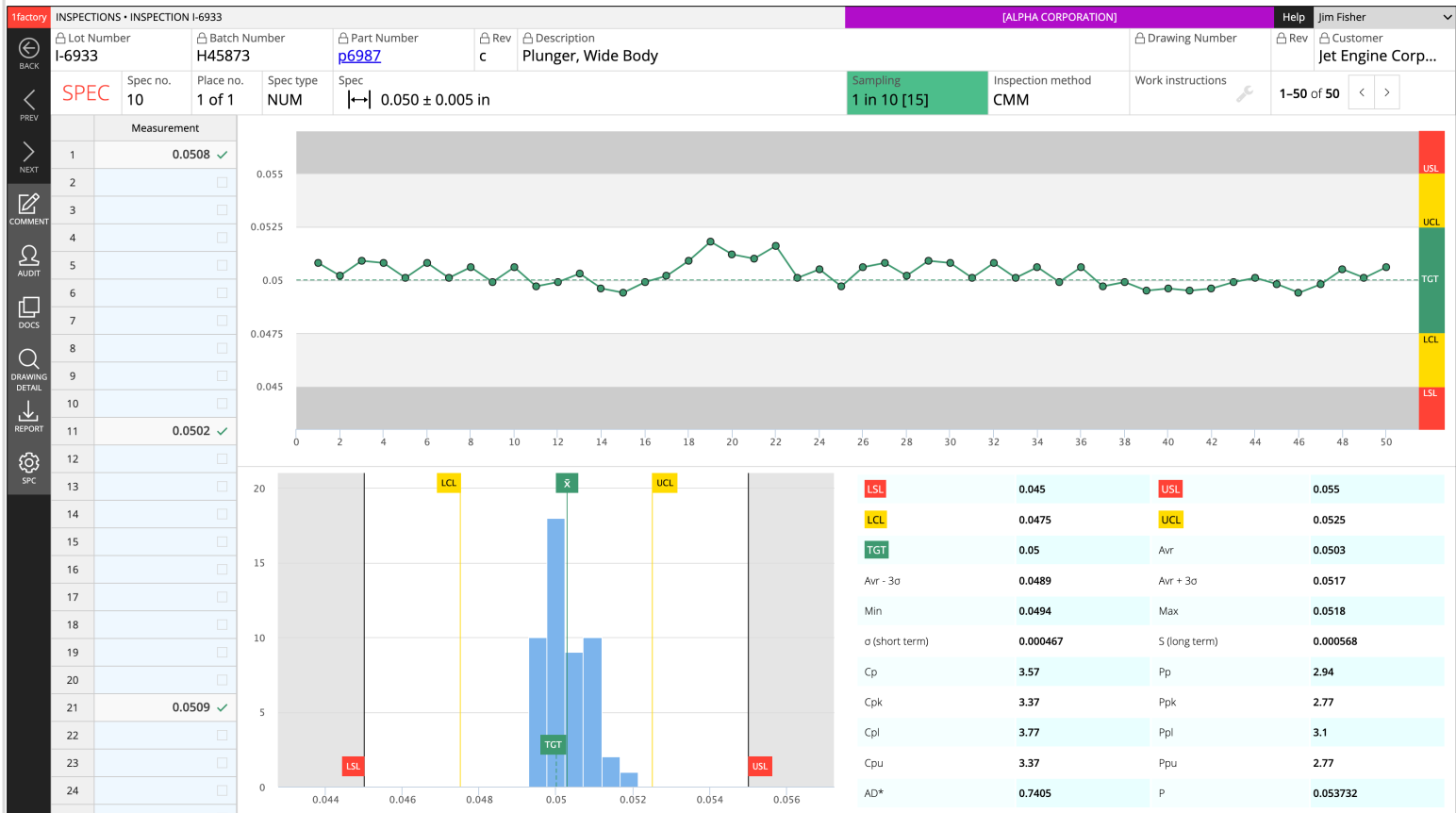
Link assembly and sub-component FAI reports. Output a single FAI package for an entire assembly.

“Recently we had a spike in new business with over 60 parts needing First Articles. With the help of 1factory, we were able to meet all deadlines and shipping dates. It was a huge time-saver, and it made our Quality department shine!”



Full Review: <https://www.capterra.com/p/151002/1factory/reviews/242303/>

In-Process Inspections, SPC, Cp, Cpk



Collect inspection data at each Operation. Detect problems at source and prevent rework and scrap.

Define control limits and SPC detection rules. Detect trends, shifts, and out-of-control events with real-time run-charts.

Enjoy automated process capability (Cp, Cpk, Pp, Ppk) calculations.

“Problems are identified at the machine with corrections being made early in the manufacturing process. Our customers have been equally impressed as well. Showing their parts being inspected at the source of manufacturing with real time data, sets us apart from their other suppliers.”



Full Review: <https://www.capterra.com/p/151002/1factory/reviews/356783/>

Data Collection, CMM Auto-Upload

BACK		Lot Number	Batch Number	Part Number	Rev	Description					
		I-6952	H364931	P9105	A	Tube					
#	PART VIEW	2	120.0 ± 0.2 DEG	5	R 0.1128 ± .0005 IN	6	∅ 0.1369 ± 0.0020 IN	12	R 0.0625 ± 0.0025 IN		
NUM	CALIPER	1 in 5 [100]	NUM	CMM	1 in 10 [50]	NUM	CMM	1 in 10 [50]	NUM	CMM	100% [500]
1		120.05 ✓			0.1127 ✓			0.13678 ✓			0.0630 ✓
2											0.0635 ✓
3											0.0634 ✓
4											0.0633 ✓
5											0.0635 ✓
6		120.08 ✓									0.0634 ✓
7											0.0632 ✓
8											0.0634 ✓
9											0.0633 ✓
10											0.0635 ✓
11		119.95 ✓			0.1128 ✓			0.13702 ✓			0.0634 ✓
12											0.0633 ✓
13											0.0635 ✓
14											0.0634 ✓
15											0.0632 ✓
16		119.91 ✓									0.0634 ✓
17											0.0635 ✓
18											0.0635 ✓
19											0.0634 ✓
20											0.0633 ✓
21		120.07 ✓			0.1128 ✓			0.13681 ✓			0.0635 ✓
22											0.0634 ✓



Easily collect data using keyboard, barcode scanners, digital gages, CMMs, and Vision Systems.

Auto-upload millions of data points from CMMs. Save thousands of man-hours of data-entry time.

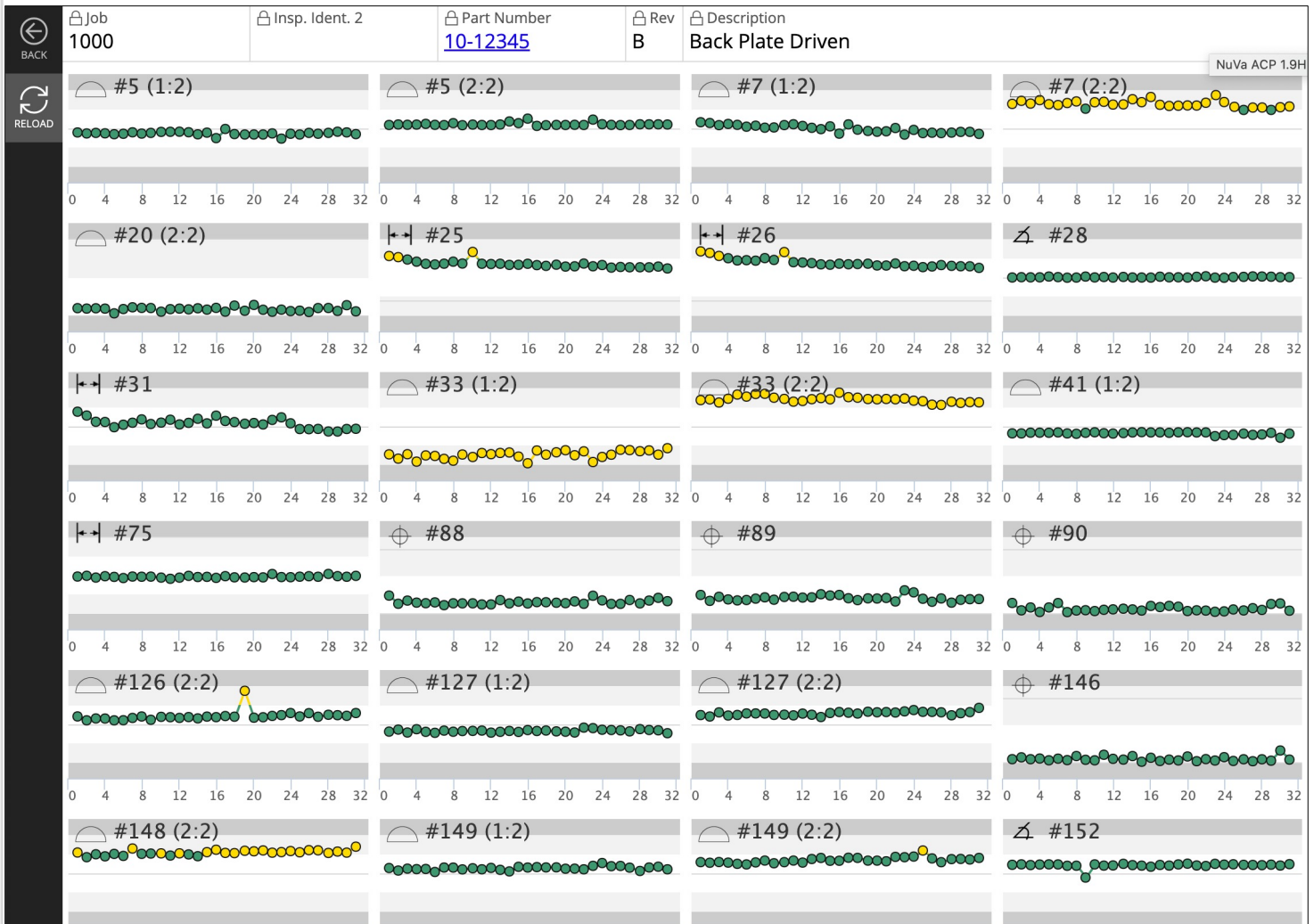
Eliminate data-entry errors.

“Data is easily imported from CMMs or by manually inputting the feature. Review of Inspection data now only takes a few minutes. In our old system, the review process could take up to several hours. Also, at the same time as you input data, you get real time SPC results of each feature.”



Full Review: <https://www.capterra.com/p/151002/1factory/reviews/214088/>

Multi-Parameter Charting



Easily monitor all critical parameters for a job on a single screen. Detect process shifts and trends in real-time.

Control quality at the point of manufacture and avoid expensive downstream rework and scrap.

“Real time data access through a cloud-based system makes it easy to monitor manufacturing remotely. Real time graphs of any parameter are instantly available and provide the current trend of manufacturing.”



Full Review: <https://www.g2.com/products/1factory/reviews/1factory-review-4124243>

Incoming Inspection, Supplier Management

INSPECTIONS • INSPECTION PO2345601

Purchase Order # PO2345601 Receipt # M-782345599 Part Number 10-29384756-001 Rev A2 Description Cylinder Armature Reverse Winding Drawing Number Supplier Delta Four Pr...

Receiving Inspection: PO2345601 (Pending)

Measurements Lot (100) Attachments (3) *Gages More Reports History Manage

No.	Sheet/Zone	Specification	Places	Type [all]	Insp. Method [all]	Sampling [all]	Key ? [all]	Label [all]	Dim. [all]	Ppk	Cpk	Min	Max	Progress [all]
1	0 : A:1	AI 6061 T6	1	P/F	Visual	1 per lot [1]	✓		STD					
2	0 : A:7	Break all edges	1	P/F	Visual	100% [100]	○		STD					
3	0 : A:7	Engrave and mark parts per specification ...	1	P/F	Visual	100% [100]	○		STD					
4	0 : A:7	Anodize per spec AND-98765	1	P/F	Visual	100% [100]	○		STD					
5	0 : A:1	Locator Holes 0.3510 — 0.3515 inch	2	NUM	Gage Pin	15% [15]	✓		STD	0.10	0.25	0.3510	0.3545	
6	0 : A:3	0.199 ± 0.003 inch	1	NUM	Depth Micrometer	C=0.40 [32]	✓	HIGH	STD	1.82	1.90	0.1977	0.2000	
7	0 : D:5	0.354 — 0.358 inch	1	NUM	Gage Pins	C=0.65 [20]	○		STD	"n/a"	"n/a"	0.3560	0.3560	
8	0 : E:3	0.232 — 0.236 inch	1	NUM	Gage Pins	C=0.65 [20]	✓		STD	2.03	3.88	0.2335	0.2350	
9	0 : E:2	7.590 ± 0.003 inch	1	NUM	Calipers	C=0.40 [32]	✓		STD	1.31	1.48	7.5900	7.5919	
10	0 : D:6	0.55 ± 0.01 inch	1	NUM	Bolt and Caliper	Z1.4_II 1.0 [13]	○		STD	3.04	3.47	0.5490	0.5520	
11	0 : A:4	2.798 ± 0.005 inch	1	NUM	Depth Micrometer a...	1 in 10 [10]	○		STD	2.02	1.90	2.7980	2.7995	
12	0 : E:4	0.354 — 0.358 inch	1	NUM	Gage Pins	1 in 5 [20]	○		STD	0.67	0.67	0.3545	0.3565	
13	0 : A:3	0.248 ± 0.003 inch	4	NUM	Drop Indicator	Z1.4_II 1.0 [13]	○		STD	2.36	2.27	0.2457	0.2472	
14	0 : D:7	0.005 inch	1	NUM	Leveling Jacks and Te...	C=0.010 [100]	✓	K-124	STD	1.79	2.36	0.0020	0.0033	
15	0 : E:5	0.002 (MMC) inch	1	NUM	Leveling Jacks and Te...	Z1.4_II 1.0 [13]	○		STD	18.07	15.74	0.0001	0.0002	
16	0 : A:4	0.138 ± 0.005 inch	4	NUM	Drop Indicator	C=0.65 [20]	○		STD	2.55	2.57	0.1389	0.1405	
17	0 : A:4	0.1365 ± 0.0005 - 0.0000 inch	2	NUM	Deltronic Pins	C=0.1.0 [19]	○		STD	0.06	0.18	0.1365	0.1367	
18	0 : A:5	0.092 — 0.097 inch	4	NUM	Pin Gages	Z1.4_II 1.0 [13]	✓		STD	1.84	2.34	0.0940	0.0951	
19	0 : E:5	0.456 ± 0.001 - 0.000 inch	1	NUM	Pin Gages	Z1.4_II 1.0 [13]	✓		STD	"n/a"	"n/a"	0.4560	0.4560	
20	0 : A:4	0.089 ± 0.003 inch	1	NUM	Depth Mic	Z1.4_II 1.0 [13]	✓		STD	1.57	2.09	0.0890	0.0910	

* Tab requires attention.

Enjoy automated sample size calculation based on industry standard or custom Sampling Tables (e.g., C=0, MIL STD, ANSI Z1.4 etc.). Switch from Normal to Tightened or Reduced based on supplier performance. Identify Skip-Lot inspection and Dock-to-Stock candidate parts and suppliers.

Record measurements, and attach Raw Material, Heat Treatment, RoHS, Coating and other supplier provided certificates.

Manage supplier qualifications and monitor supplier quality and on-time delivery performance with automated dashboards and scorecards.

“This software provides Less paperwork, less errors, more quality, monitoring capabilities, spec. requirements, QC Plans, Inspection Plans, Supplier Dashboards, all of this and so much more. And did I mention the money it saved in labor...outstanding !!!”



Full Review: <https://www.capterra.com/p/151002/1factory/reviews/124533/>

Defect Risk Monitoring

1factory INSPECTIONS [ALPHA CORPORATION] Help Jim Fisher

Manufacturing Inspections

+ New Inspection Search 1-20 of 20

Customer [all]	Lot Number	Batch Number	Part No - Rev [all]	Description	Type [all]	Created On	In-spec %	Defect Risk	Shared [all]	Status [all]
Cone Manufacturing	I-6952	H364931	P9105 A	Tube Frame Structure	In Process	04-26-2022	99.8 %	HIGH	<input type="radio"/>	PENDING
Global Electric	I-6951	H558749	P2569 A	Cylinder Mount, Forearm	In Process	04-26-2022	100.0 %	LOW	<input type="radio"/>	ACCEPTED
Clarity Automotive	I-6950	B11236	P4563 A	Drive Shaft, Rear	In Process	04-26-2022	100.0 %	LOW	<input type="radio"/>	ACCEPTED
Global Electric	I-6949	H00265	P7009 A	Cam With O-ring	In Process	04-22-2022	83.6 %	HIGH	<input type="radio"/>	REJECTED
Centipede, Inc	I-6948	H20036	P5089 B	Tube Extension	In Process	04-22-2022	100.0 %	LOW	<input type="radio"/>	ACCEPTED
Jet Engine Corporation	I-6947	H22016	RA 4164-9 A	Recovery Shaft	Final	04-22-2022	100.0 %	LOW	<input type="radio"/>	ACCEPTED
Global Electric	I-6946	A200564	P7009 A	Cam With O-ring	In Process	04-22-2022	100.0 %	LOW	<input type="radio"/>	ACCEPTED
Cone Manufacturing	I-6945	H52210	P9105 A	Tube Frame Structure	In Process	04-22-2022	100.0 %	LOW	<input type="radio"/>	ACCEPTED
Delta Tech	I-6943	H50016	P7084 A	Bushing Group A	In Process	04-22-2022	100.0 %	HIGH	<input type="radio"/>	ACCEPTED
Jet Engine Corporation	I-6942	B50639	P10058 A	Cylinder Housing, Fixed	Final	04-22-2022	100.0 %	LOW	<input type="radio"/>	ACCEPTED
Delta Tech	I-6941	H65106	P7084 A	Bushing Group A	Final	04-22-2022	100.0 %	LOW	<input type="radio"/>	ACCEPTED
Jet Engine Corporation	I-6940	A58743	p6987 c	Plunger, Wide Body	In Process	04-22-2022	100.0 %	MEDIUM	<input type="radio"/>	ACCEPTED
Jet Engine Corporation	I-6939	H501169	P10058 A	Cylinder Housing, Fixed	Final	04-21-2022	100.0 %	LOW	<input type="radio"/>	ACCEPTED
Jet Engine Corporation	I-6938	H50668	p6987 c	Plunger, Wide Body	In Process	04-21-2022	100.0 %	LOW	<input type="radio"/>	ACCEPTED
Global Electric	I-6937	b50477	P7808 A	Bearing Mount Plate	In Process	04-21-2022	100.0 %	LOW	<input type="radio"/>	ACCEPTED
Jet Engine Corporation	I-6935	H54687	RA 4164-9 A	Recovery Shaft	In Process	04-21-2022	100.0 %	LOW	<input type="radio"/>	ACCEPTED
Alpha Systems	I-6934	B1256	P26975 B	Frame Assembly	In Process	04-21-2022	100.0 %	LOW	<input type="radio"/>	ACCEPTED
Jet Engine Corporation	I-6933	H45873	p6987 c	Plunger, Wide Body	In Process	04-21-2022	99.2 %	HIGH	<input type="radio"/>	REJECTED
Jet Engine Corporation	I-6931	H5039	RA 4164-9 A	Recovery Shaft	In Process	04-21-2022	100.0 %	LOW	<input type="radio"/>	ACCEPTED
Jet Engine Corporation	I-6392	7772-01	RA 4164-9 A	Recovery Shaft	Final	03-25-2020	100.0 %	HIGH	<input type="radio"/>	ACCEPTED

Easily identify High-Risk Lots, Suppliers and Features. Address risks before defective parts are produced and shipped.

Analyze feature-level performance across inspection lots. Filter data by Shift, Cavity, Machine, Operator etc. to identify systemic causes of variation.

Drive Process Improvement within your factory and across your supply chain.

“We have had success using data from 1factory to drive process improvement with our suppliers, and we see this as a key advantage to proactively manage our high-risk parts and suppliers with more rigor. 1factory is now a key tool in our supplier quality arsenal to manage risk in our supply base.”



Full Review: <https://www.capterra.com/p/151002/1factory/reviews/1864702/>

PPAP: Process Flow, PFMEA, Control Plan

1factory PPAPS - PPAP 10-12345-01 A

Reason Code: New Design | Level: Level 3 | Part Number: 10-12345-01 | Rev: A | Description: Camshaft Forward Replacement Bearing, Position X1 | Drawing Number: | Supplier: Global Motors

PPAP: 10-12345-01 A (Open)

+ Add task | Files | Tasks (0) | Requirements | Links (0) | Reports | History | Manage

<input type="checkbox"/>	Req. ? [all]	Document Description	Files	Comments	Updated By	Changed On	Status [all]
<input type="checkbox"/>	✓	Part Submission Warrant					PENDING
<input type="checkbox"/>	✓	Design records					PENDING
<input type="checkbox"/>	✓	Engineering change documents	ECN34002301 Release Document...		Nipun Girotra	08-28-2022	APPROVED
<input type="checkbox"/>	✓	Customer engineering approval					PENDING
<input type="checkbox"/>	✓	Design FMEA	DFMEA Document.docx		Nipun Girotra	08-28-2022	APPROVED
<input type="checkbox"/>	✓	Process flow diagrams	Process Flow Diagram.docx		Nipun Girotra	08-28-2022	APPROVED
<input type="checkbox"/>	✓	Process FMEA	PFMEA 10-12345-01 A.docx		Nipun Girotra	08-28-2022	REJECTED
<input type="checkbox"/>	✓	Control plan	Control Plan 10-12345-01 A.d...		Nipun Girotra	08-28-2022	PENDING
<input type="checkbox"/>	✓	MSA	Gage R&R CMM Mitutoyo.docx		Nipun Girotra	08-28-2022	PENDING
<input type="checkbox"/>	✓	Dimensional analysis	Manufacturing Inspection Dat...		Nipun Girotra	08-28-2022	PENDING
<input type="checkbox"/>	✓	Material performance results	Material Cert Alcoa Al6061 L...		Nipun Girotra	08-28-2022	PENDING
<input type="checkbox"/>	✓	Initial process studies	Process Capability Data.docx		Nipun Girotra	08-28-2022	PENDING
<input type="checkbox"/>	✓	Qualified laboratory documentation					PENDING
<input type="checkbox"/>	✓	Appearance Approval Report	Color Delta E Delta a Delta ...		Nipun Girotra	08-28-2022	PENDING
<input type="checkbox"/>	✓	Sample product					PENDING
<input type="checkbox"/>	✓	Master sample					PENDING
<input type="checkbox"/>	✓	Checking aids					PENDING
<input type="checkbox"/>	✓	Records of compliance					PENDING

Use our Master PPAP Library to automatically create PFMEAs and Control Plans and save hours of time per PPAP.

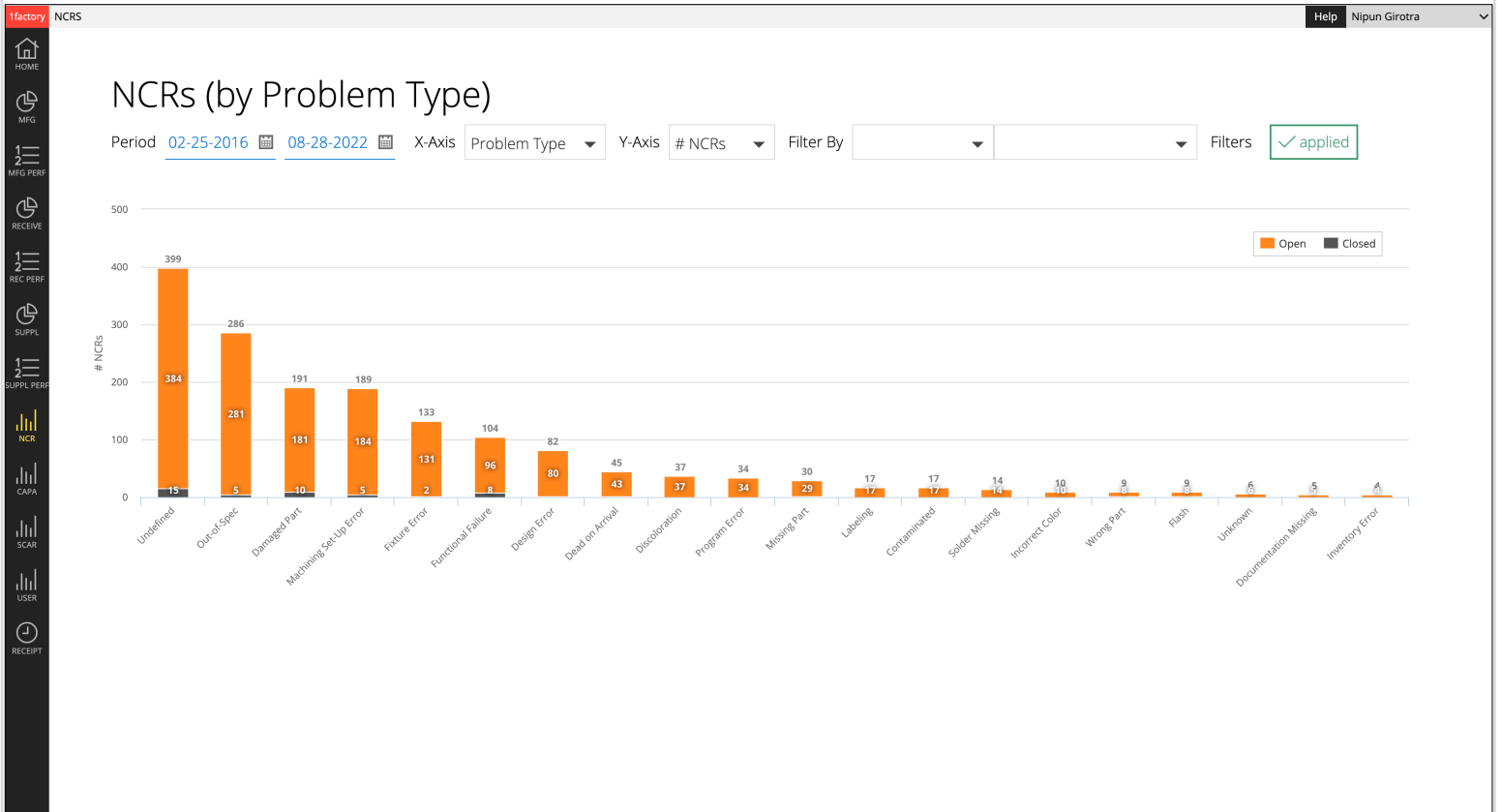
Create and manage Customer and Supplier PPAP packages including, Process Flow Diagrams, PFMEAs, Control Plans, Gage R&Rs, Process Capability (Cp, Cpk) Studies, Measurement Reports, Material Certs and more.

“This software helped us go from handwritten excel spreadsheets to a totally digital/cloud-based system. The initial setup was far less complicated than we had imagined as well. It's quicker and more efficient in general and PPAPs are easier.”



Full Review: <https://www.g2.com/products/1factory/reviews/1factory-review-3594527>

NCR, CAPA, SCAR Management



Create a fully-populated NCR from within an inspection with a single-click.

Assign owners and tasks. Manage Material Review Board (MRB) disposition, problem and root-cause classification, and corrective actions.

Trend NCRs by Problem Type, Root-Cause, Customer, Supplier, Month etc.

Create and manage internal CAPAs and external SCARs. Link NCRs to CAPAs and SCARs.

"We use the NCR charts to attack areas that need attention, whether it be supplier defects or recurring shop floor defects. This drives Corrective Action, for which 1factory also has a superb CAPA module with task management to drive actions with dates!"



Full Review: <https://www.capterra.com/p/151002/1factory/reviews/1111265/>

Gage Calibration, Gage R&R, Issue & Return

1factory GAGES Help Nipun Girotra

Gages Search 1-20 of 28

[+ New Gage](#)

<input type="checkbox"/>	Gage ID	Make [all]	Description	UoM	Gage Type [all]	Ref? [all]	Storage Location [all]	Default Owner [all]	Gage Kit	Status [all]	Cal Due Date	Cal Status [all]	
<input type="checkbox"/>	G10003	Mitutoyo			Caliper	<input type="radio"/>		Nipun Girotra		ISSUED	06-02-2022	EXPIRED	
<input type="checkbox"/>	G10013	Mitutoyo	Depth Gage 6" Rang inch		Depth Gage	<input type="radio"/>				RETURNED	06-30-2022	EXPIRED	
<input type="checkbox"/>	G10045	Mitutoyo			CMM	<input type="radio"/>			Kit 2	RETURNED	08-23-2022	EXPIRED	
<input type="checkbox"/>	G10015	Mitutoyo	Depth Gage 6" Rang		Depth Gage	<input type="radio"/>				ISSUED	08-26-2022	EXPIRED	
<input type="checkbox"/>	G10004	Mitutoyo	6"micrometer		Micrometer	<input type="radio"/>			Kit 2	RETURNED	09-10-2022	30 DAYS	
<input type="checkbox"/>	G10010	Starrett	Precision Micromete in		CMM	<input type="radio"/>	Collimation			RETURNED	10-07-2022	OK TO USE	
<input type="checkbox"/>	G10008	Hexagon	Zeiss CMM, large fra in		Depth Gage	<input type="radio"/>	EE		Kit 1	RETURNED	10-27-2022	OK TO USE	
<input type="checkbox"/>	G10028	Mitutoyo	Micrometer 123		Micrometer	<input type="radio"/>				ISSUED	11-07-2022	OK TO USE	
<input type="checkbox"/>	G10023	Starrett	Precision Micromete in		CMM	<input type="radio"/>	Quality			ISSUED	11-08-2022	OK TO USE	
<input type="checkbox"/>	G10009	Renishaw	Micrometer, Preciso in		Bore Gage	<input type="radio"/>	EE		Kit 2	RETURNED	12-03-2022	OK TO USE	
<input type="checkbox"/>	Test 123456	Zeiss			CMM	<input type="radio"/>	Quality	Michael Corrales		RETURNED	12-20-2022	OK TO USE	
<input type="checkbox"/>	G10014	Mitutoyo	Depth Gage 6" Rang inch		Depth Gage	<input type="radio"/>				ISSUED	01-14-2023	OK TO USE	
<input type="checkbox"/>	G10001	Hexagon			Bore Gage	<input type="radio"/>				ISSUED	03-10-2023	OK TO USE	
<input type="checkbox"/>	G10020	Starrett	Dial Bore Gage, 0.71 in /mm		Caliper	<input type="radio"/>	Operations			ISSUED	03-17-2023	OK TO USE	
<input type="checkbox"/>	G10007	Starrett	Dial Bore Gage, 0.71 in /mm		Caliper	<input type="radio"/>	Alpha Build Toolbox			ISSUED	05-01-2023	OK TO USE	
<input type="checkbox"/>	G10016	Hexagon			Micrometer	<input type="radio"/>				ISSUED	05-17-2023	OK TO USE	
<input type="checkbox"/>	G10011	Mitutoyo	Depth Gage 6" Rang inch		Depth Gage	<input type="radio"/>	Beam Generation			ISSUED	06-03-2023	OK TO USE	
<input type="checkbox"/>	G10002	Hexagon			Micrometer	<input type="radio"/>			Kit 1	RETURNED	06-27-2023	OK TO USE	
<input type="checkbox"/>	G10006	Mitutoyo	Digital Caliper, Stain mm		Micrometer	<input type="radio"/>	Collimation			ISSUED	08-07-2023	OK TO USE	
<input type="checkbox"/>	G10051	Mitutoyo			Caliper	<input checked="" type="radio"/>				RETURNED	08-10-2023	OK TO USE	

Maintain a list of Gages with calibration due dates. Receive automated notifications for gages due for calibration. Log actual calibration data, and supplier calibration certs. Issue gages to Job, Operation & Machine, User or Location. Capture Gage ID during inspections and ensure that each gage used is calibrated. Enjoy automated Gage R&R calculations for % Contribution and NDC.

“One of the most useful features is the Master Gage library, this can set up reminders for calibration, calibration history, serial numbers, attachments and practically anything to manage complex environments like ours with many hand gauges, tools and equipment. It gives you easy to understand color coded warnings to alert you that some of your gages and equipment are due for calibration.”



Full Review: <https://www.g2.com/products/1factory/reviews/1factory-review-3638255>

Security, Reliability, Validation, E-Signature

Ease-of-Use

- Designed by a team with deep manufacturing expertise.
- Training takes one hour. Customers are up and running the same day.
- Zero IT Overhead.

Scalability

- Easily scales to hundreds of users and thousands of parts and characteristics.
- Manage millions of inspection data points, and thousands of certs.

Security

- Data encrypted at rest. Data encrypted during transfer. NIST 800-171 Compliant.
- Hosted on ITAR compliant AWS GovCloud (default); SOC2 Certificate Provided.

Reliability

- Uptime of 99.99+% over the last 7 years with 3rd party monitoring.
- Automated data backups duplicated across geographical regions.

Validation

- Verification testing completed and documented by 1factory.
- Validation scripts with detailed test cases available to customers for validation.

E-Signature

- Captures e-signatures during QC Plan release.
- Captures e-signatures for inspection data entry, approval and rejection.

Industries and Geographies Served



Industries Served

- Aerospace
- Medical Devices
- Semiconductor Equipment
- Precision Machining
- Heavy Equipment
- Metal Fabrication
- Injection Molding
- Magnetics
- Optics
- Composites
- Food & Pharmaceutical Packaging
- Industrial Equipment
- Consumer Goods
- Automotive
- Robotics

Geographies Served

- United States (HQ), Canada, Mexico
- United Kingdom, Denmark, Germany, Italy
- Israel, India, Malaysia, China, Taiwan, Vietnam
- Trinidad & Tobago, South Africa, Australia

Languages

- English
- French
- German
- Spanish
- Italian
- Mandarin



“After you use 1factory, all other programs will feel subpar.”



Full Review: <https://www.capterra.com/p/151002/1factory/reviews/3475267/>